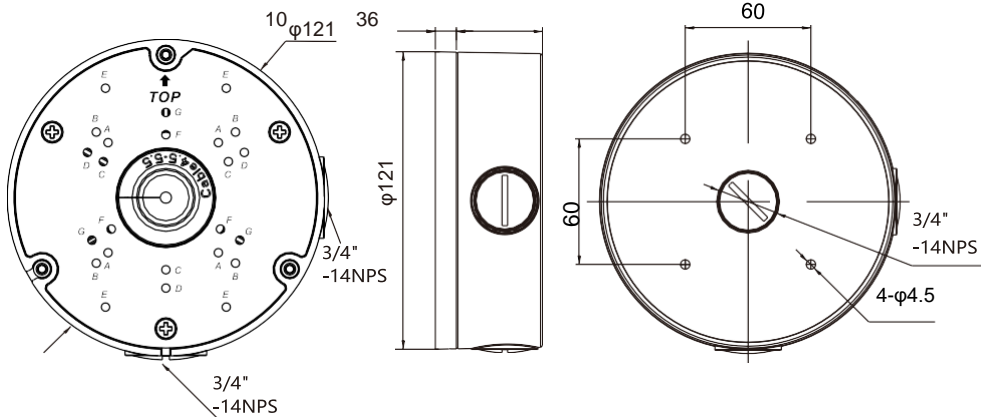


Multi- function Junction Box Fitting

BJR49B

MEASUREMENTS (Unit: mm)

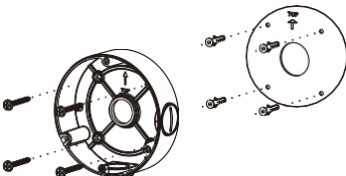


There are three pipe thread interface in the junction box, one of which needs to be used, so our company provides two plugs.

PRODUCT INSTALLATION

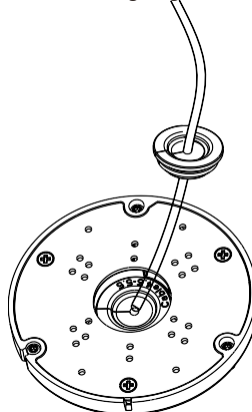
1. Install base

- Stick the Installation location sticker on the installation surface. Drill four holes based on the marks on the sticker. Drive the swell plastic buttons into the holes.
- Remove upper cover and **attach the base to the surface.**

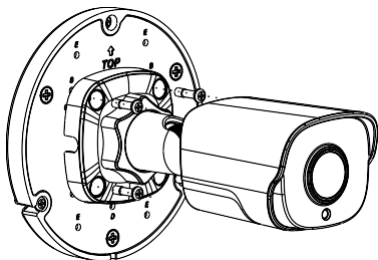


2. Install cover

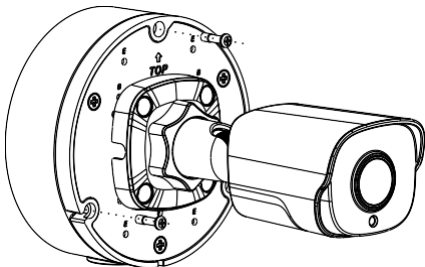
- Plug the multi-head cable of the camera into the silicon plug.
- Install the sealing ring on the upper cover.



3. Plug the silicon plug into the upper cover, and then attach camera to the upper cover plate. Pay attention to select correct screw holes to match the different model type.



4. Finish the other installations as below.



Code and appearance list:

Code	Model
A	BU404R2
B	BU218Z-IA / BU418Z-IA / BU404R
C	
D	BU407Z
E	BU417Z / BU817Z
F	
G	
H	