

RS-485/Wiegand PROXIMITY Reader

QUICK START GUIDE

1 Package Contents

Kindly ensure the product's contents upon unpacking; please refer to this quick start guide regarding the product's specifications and important notices. the items described below are the standard packaging.



Reader x1



Quick Start guide x1

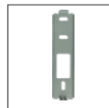
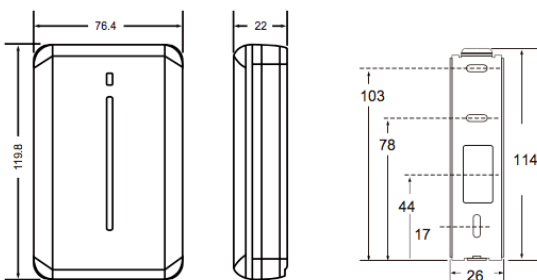


Plate x1



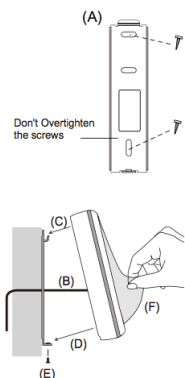
Hex Key wrench x1
Screw x3
Cable x1

2 Physical Dimension



Scale : mm

3 Installation



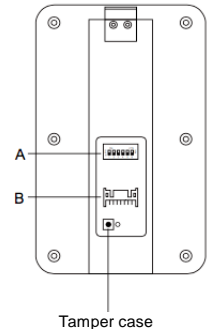
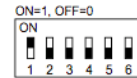
- Kindly refer to the " 4 wiring connections" before the hardware installation
 - Do not over tighten the back plate screws during installation to prevent distortion.
- (A). Mount the back plate onto the wall or electrical back box (120 type. American spec.).
 - (B). Connect the wires in accordance with the wiring instruction below.
 - (C). Make sure the back plate and the reader upper cover guides are aligned.
 - (D). Install the reader upper cover to the back plate.
 - (E). Use the hex key wrench to fasten the screw onto the bottom of the reader.
 - (F). Tear off the protective film.

4 Wiring Connections

Before mounting the reader onto desired location. Please set the NODE ID (DIP Switch, binary number system).
The position of the components varies according to the reader's model. Kindly take note of the components during setup.

NODE ID Settings, refer to the chart below.

| Node ID | Configuration |
|---------|---------------|
| 0 | 000000 |
| 1 | 100000 |
| 2 | 010000 |
| 3 | 110000 |
| 4 | 001000 |
| 5 | 101000 |
| 6 | 011000 |
| 7 | 111000 |
| 8 | 000100 |
| 9 | 100100 |
| 10 | 010100 |
| 11 | 110100 |
| 12 | 001100 |
| 13 | 101100 |
| 14 | 011100 |
| 15 | 111100 |



| Pin | Color | Wiegand | RS-485 |
|-----|----------------|-----------------|-----------|
| 1 | Red | DC+12V IN | DC+12V IN |
| 2 | Black | Ground | Ground |
| 3 | Yellow | - | RS-485 + |
| 4 | Blue | - | RS-485 - |
| 5 | Gray | OP1 (Reserved) | - |
| 6 | Pink | - | - |
| 7 | Orange & White | Ground | - |
| 8 | Orange | Red LED Control | - |
| 9 | Brown | - | - |
| 10 | Purple | Beep Control | - |
| 11 | White | Tamper case GND | - |
| 12 | Green | Tamper Case | - |
| 13 | Red & White | W0 | - |
| 14 | Gray & White | W1 | - |

Note:

1. Kindly use minimum 22AWG double-shielded aluminum mylar foil twisted pair cable for the connection between the reader and the controller.
2. In order to reduce long distance noise, The isolated net of transmission cable should connect to both ends of device ground.
3. The distance between two readers should be over 30cm to prevent radio frequency interference from each other.
4. Mounting the device around metal could affect read range. Metal of any type around the device should be avoided while mounting.
5. The distance between the reader and the controller should not exceed 30 meters. (For Wiegand/T2 module only)
6. For optimum read range, kindly use DC Linear power adaptor for the reader's power supply.
7. In order to ensure the reader's normal operation, input voltage should be between 12V±10%.
8. If the reader is installed in an open area or highly humid environment, it is recommended to protect the reader with an external shielding cover.

ONE YEAR LIMITED WARRANTY

We warrant this product against defect in material or workmanship for 1 year from the date of purchase. If such a defect is discovered within this warranty limitation, contact your direct vendor for repair or replacement of your unit.

When returning the product, you must ship the product in its original packaging or packaging that gives an equal degree of protection. This warranty becomes invalid if the factory-supplied serial number has been removed or altered on the product.

This warranty does not cover cosmetic damage or damage due to acts of God, accident, misuse, abuse, negligence or modification of any part of the product. This warranty does not cover damage due to improper operation or maintenance, connection to improper equipment, or attempted repair by anyone other than We.

In no event shall We liability exceed the price paid for the product from direct, indirect, special, incidental, or consequential, damages resulting from the use of the product, its accompanying software, or its documentation. We makes no warranty or representation expressed, implied, or statutory, with respect to its products, contents of use of this documentation and all accompanying software, and specially disclaims its quality, performance, merchantability or fitness for any particular purpose. We reserve the right to revise or update its product, software or documentation without obligation to notify any individual or entity.